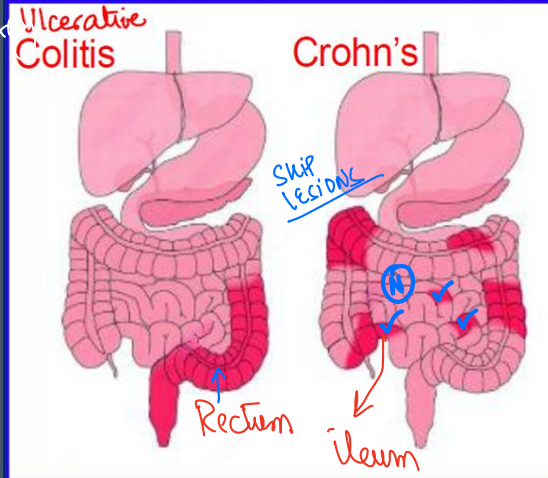


Ulcerative Colitis and Crohn Disease

Ulcerative Colitis and Crohn Disease

I.B.D ^{inflammatory}
↓ ^{bowel} ^{disease}

- + Hematochezia
- + wt loss
- + FISTULA



I.B.S
Irritable bowel
Syndrome

- * R. abdo pain
- Relief \bar{c} defecation
- * Constipation A/W
diarrhea

Nursing Priority Action & Management

[INFliximAB infusions

	Crohn disease	Ulcerative Colitis
--	---------------	--------------------

Part involved M/C	Ileum	Rectum (Proctitis)
----------------------	-------	--------------------

Part spared	Rectum	Small intestine not involved
-------------	--------	------------------------------

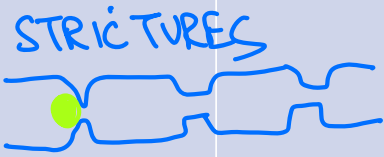
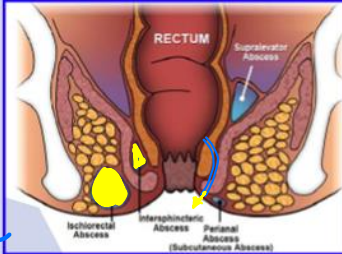
Special features

Colicky
abdo pain

Steatorrhea

Wt loss

LG FEVER



- Bloody diarrhea
- Anemia
- Perianal edema
- LG FEVER

bulky foul smelling stools

FISTULA = hallmark
perianal feature

Nursing assessment findings of UC

1. Pallor $Hb \downarrow$
2. Record of bloody stools per day *
3. Temperature
4. Weight monitoring
5. Remission and exacerbation history
6. Check for edema of feet $albumin \downarrow$
7. Check for dehydration evidence and electrolyte imbalance if any $K \downarrow$

TRUE love & witts
CRITERIA
SEVERITY of UC
=

Rx Exacerbation of UC
↳ Budesonide enema

Pedal edema:
pitting

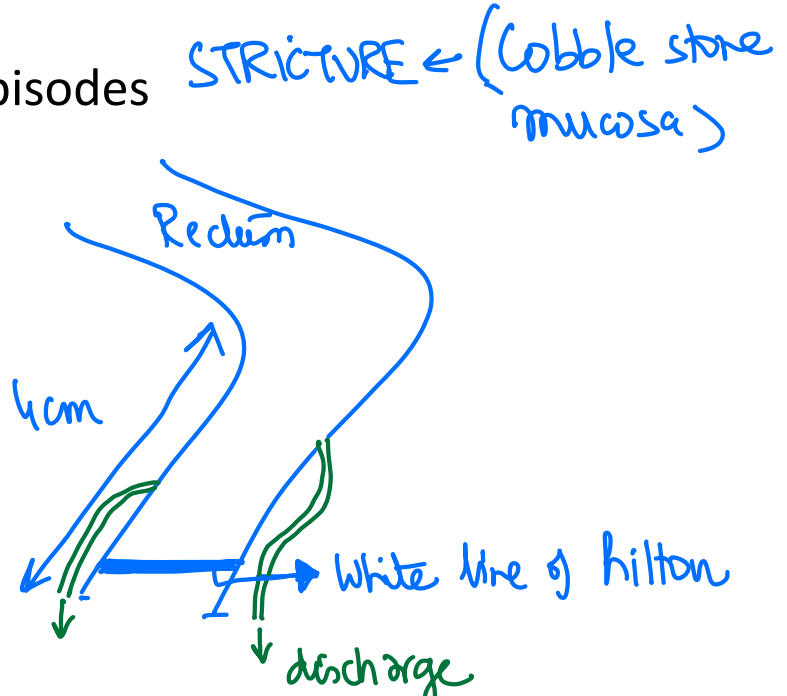
:CHF: CLD : albumin \downarrow
:CKD: Nephrotic syn: "
2° aldosteronism

Nursing assessment of Crohn disease

1. Abdominal crampy pain episodes
2. Weight monitoring ↓
3. Pallor +
4. Dehydration if any
5. Perianal examination

FISTULA

MCC death in CD
* PERIANAL SEPSIS



Nursing interventions for IBD

1. High protein diet with vitamins and iron
2. Compliance with Sulfasalazine and budesonide
3. Avoid smoking and alcohol
4. Avoid gas forming food and milk products

Whole wheat, raw fruits, raw vegetables, caffeine and pepper

DOC for Crohn disease:

DOC for ulcerative colitis

Acute exacerbation of UC

1. NPO
2. Monitor NPO and monitor stool frequency and consistency with blood
3. Clear liquid diet introduced gradually

Surgery for UC:

2 step procedure

Ileostomy which is closed after 2 months to allow healing of internal pouch

PROTEIN losing enteropathy

I.D.A



* lactase deficiency

* DOC CRDHS

Budesonide oral
Release preparations

* DOC UC

MESALAMINE

* UC exacerbation

add. Rectal
budesonide
enema

Toxic megacolon

ileal pouch

PROCTO COLECTOMY + anal
anastomosis