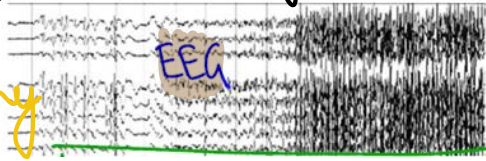


Seizures

MCC acquired epilepsy in India

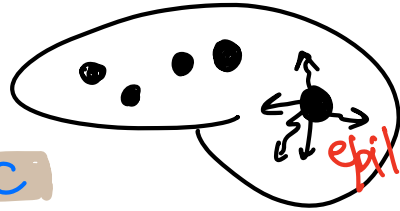
Electroencephalography



: NCC

Neurocysticercosis

(due to consumption Cabbage)
Tenia solium eggs lettuce



Calcification

epileptogenic foci

DOC GTCS \Rightarrow Valproate

DOC GTCS in pregnancy) young \Rightarrow Levetiracetam
Lamotrigine

FEATURES GTCS: slum dweller 30yrs

1. Prodromal features :

Headache, Nausea

2. Ictal cry

3. (15 sec) Tonus: \uparrow Tone in all extremities

Aspiration
Temp ↑
lactic acidosis

3. (1-2 sec) Clonus: involuntary Jerking of all limbs

- * Peri-oral cyanosis
- * Frothing corners of mouth
- * Tongue bite +/-

↓
Unconscious
Rattling sounds: Throat
Urine incontinence +
Stool //

5. POST ICTAL DEFICIT

↓
gradual orientation Time, space
person

- * CONVULSION: VIOLENT JERKING OF LIMB(S)
- SEIZURE: Ab (n) electrical activity
- epilepsy: ≥ 2 episodes of seizures

Hypoglycemic seizures \Rightarrow iv 25-50% DEXTROSE
RBS: 20 mg/dL

Epilepsy: ≥ 2 episodes of seizures

MC epilepsy

Adult = G.T.C.S | grand Mal epilepsy

" "

children \Rightarrow Benign Rolandic epilepsy

\downarrow
focal seizures

Triggers: Heat, emotion, pain, \downarrow sugar

"BLACK-OUT"

Vasovagal syncope

HR \downarrow

BP \downarrow

cerebral ischemie

features: PERI-ORAL pallor,
cold extremities

Tone \downarrow

leg Raise BIL


Venous Return \uparrow

intervention
 \rightarrow

MC type of seizures in adults : GTCS = Valproate
Focal seizures/ Partial seizures → Carbamazepine
Involuntary Jerking arm/hand
face

A Simple partial seizures CONSCIOUS +

B Complex partial seizures loss of consciousness

Myoclonus → few muscle groups, involuntary movts
Atonic → TONE ↓ DROP attacks
Salaam seizure, WEST-syndrome
8mth:  *inj ACTH
VIGABATRIN

DRUG ATTACKS

MC type of seizures in neonate → SUBTLE SEIZURES

MC type of seizures in child → FEBRILE SEIZURES

(6mths - 5yrs)

Management of an episode → Intranasal midazolam
Rectal diazepam

Prevention of an episode → oral clobazam / diazepam

Typical episodes: single episode, day 1