

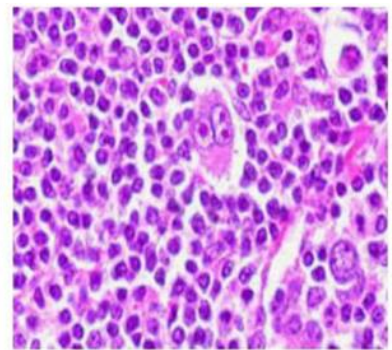
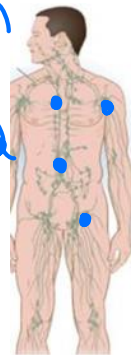
10C Lymphoma

Excision lymph node Bx

Types

- 1.
- 2.

Hodgkin's L : lymphatic spread
 Non " L : Hematogenous spread



Differentiating feature from pathology

Lymphoma presents as

1. LG fever off and on *PCM*
2. Night sweats
3. Weight loss : $> 10\%$ ↓
4. Lymph node enlargement with rubbery consistency of lymph nodes ✓



Reed Sternberg Cells

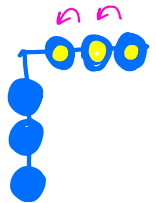
* LN ⊕ : MATTED CONSISTENCY = TB



LANGHMAN Type of

giant cells

Nursing assessment



neck mass

1. Cervical lymphadenopathy :

2. Hilar lymph node enlargement

R.L.N #: Hoarseness of voice

Trachee #: STRIDOR
Bronchi

3. Abdominal lymph node enlargement

CBD #: obstructive Jaundice

4. Category **B** symptoms; fever, weight loss and night sweats

> 10% ↓

↓
TB LIKE

Interventions in Hodgkin's lymphoma

Spreads via *lymphatics*

Radiosensitive tumor like seminoma of testis

Stage 1 HL: External beam radiotherapy *EBRT*

Stage II – IV HL: *ABVD: ADRIAMYCIN – BLEOMYCIN
VINBLASTINE – DACARBAZINE*

Interventions: Non-Hodgkin Lymphoma

Spread via Hematogenous spread

Chemotherapy: R-CHOP
RITUXIMAB
CYCLOPHOSPHAMIDE
HYDROXY-DAUNOMYCIN

Monitor

1. Chemotherapy side effects
 2. Temperature monitoring for infection ✓ Vomiting
 3. Petechiae, purpura, visible bleeding for low platelets
 4. Sperm banking ova cryopreservation due to risk of sterility
- ONCOVIN
PREDNISONE

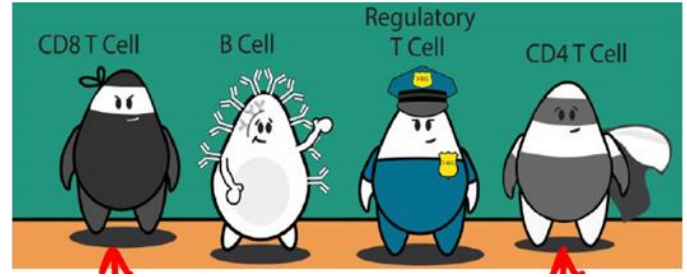
Lymphocytes Function

B cells → Antigen detection
T cells → Cellular immunity
NK cells → Viral infection

Plasma cells : Y Y : Antibody production

✓ B cell : ALL : CD 19 CD 20 : flow cytometry
✓ T cell : ALL : CD 2 CD 7

Plasma cell tumor



skull

→ Bence Jones proteins in urine

XRay: lytic lesions

Multiple myeloma

defective $\gamma\gamma$ production in excess

INFECTION
CRAB

MCC of death

Findings seen



MC site lytic lesions

in MM
↓

VERTEBRA

features

- C
- R
- A
- B

CALCIUM ↑

RENAL FAILURE

ANEMIA : normoblasts ↓ : RBC ↓
count

Bony lytic lesions

Investigation of choice: →

BONE MARROW Bx

+ L plasma cell > 10%

Drug of choice:

↳

lenalidomide

+ DEXAMETHASONE + BORTEZOMIB

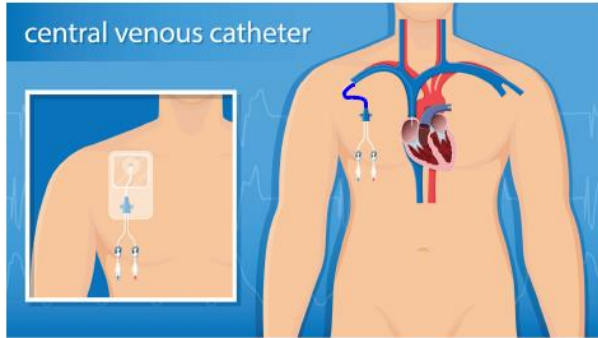
	Hodgkin Lymphoma	Non Hodgkin Lymphoma
Spread by	lymphatics	Hematogenous
Pathology Feature	RS cell	-
Usual clinical presentation	Cxal LN ⊕ → Category B symptoms ← Abdominal LN ⊕	
Special feature	RUBBERY consistency Contiguous spread	non-contiguous sp
Investigation of choice	EXCISION LN Bx	
Chemotherapy or Radiotherapy	RT + ABVD	R-CHOP

Blood cancer	Common clinical presentation	Drugs used
Acute lymphoblastic leukemia	Anemia Bleeding ✓ Low platelets Enlarged liver and spleen	Vincristine, Prednisone Adriamycin Intra Thecal Mtx
Acute myeloid leukemia	Enlarged lymph nodes Recurrent infections like herpes Zoster, HSV, sepsis pneumonia, UTI	M ₃ = ATRA Arsenic Trioxide
Chronic myeloid leukemia	* Massive splenomegaly	IMATINIB (T.k.i)
Chronic lymphocytic leukemia	* Autoimmune Hemolytic A // Thrombocytopenia Cxal W ⊕	Fludarabine

Chemo delivery



1. CHEMPORT : subclavian vein



2. HickMAN cath : "