

# Lung cancer

MC CANCER in ♂/♀ leading to death

Secondaries/ metastasis

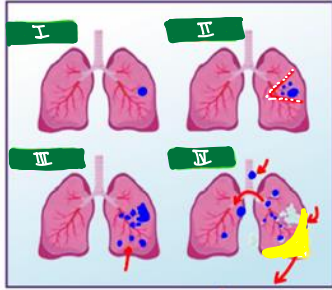
↳ Ca BREAST

Primary malignant lung tumors

↳ Adenocarcinoma

Leading cancer in men and women that leads to DEATH

↳ Ca lung



Risk factors

1. Smoking → SQUAMOUS/SMALL

2. Passive smoking

3. Radon gas MC: Adenocarcinoma

4. Asbestosis < most characteristic L Mesothelioma

5. mutations in adenocarcinoma

most aggressive  
↳ Ca lung  
↓  
Oat cell  
small cell

Ca BREAST

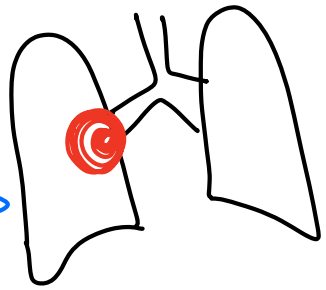
sporadic: p53 mutation

⊕ family history:  
BRCA 1

→ EGFR, K-RAS mutation

Squamous  
SMOKING  
CENTRAL

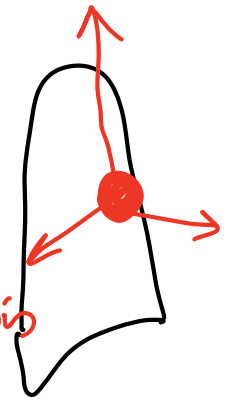
STRIDOR, Hoarseness  
local growth  
Sx Resection: good prognosis



Small  
SMOKING  
CENTRAL

micromets  
WORST prognosis

ADH: SIADH  
ACTH: Cushing syn



Adenocarcinoma  
NON SMOKER

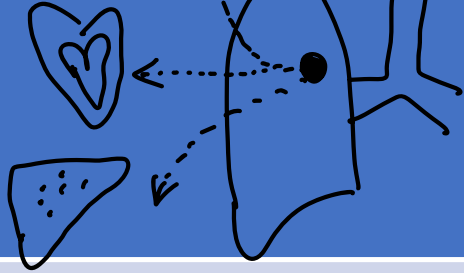
✓ PERIPHERAL  
✓ TREPEPNEA  
x dysnea ↑ lateral decubitus



Large  
NON SMOKER

PERIPHERAL  
estrogen: gynaeco -  
+ mastia

Small cell lung cancer  
SCLC



Prognosis

BAD

Spread

HEMATOGENOUS

Work up

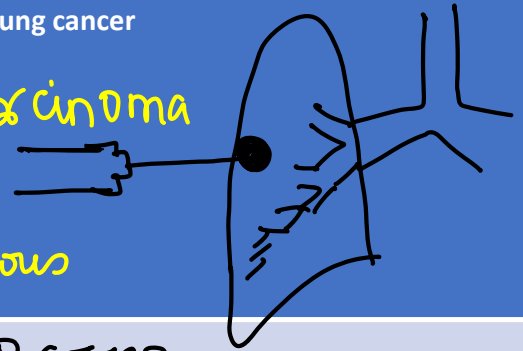
Bronchoscopy + Bx

Interventions

chemotherapy

Non small cell lung cancer  
NSCLC

Adenocarcinoma  
Large  
Squamous



Prognosis

BETTER

Spread

local spread

Work up

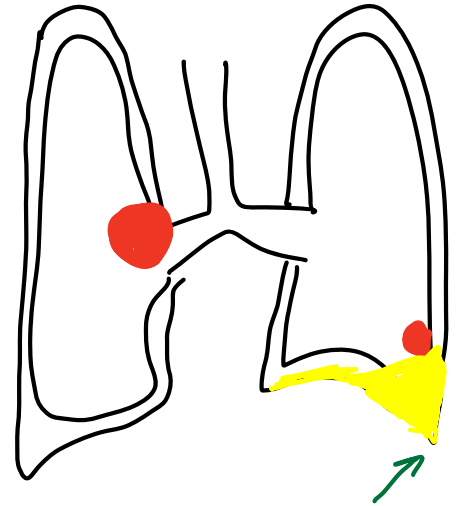
CT guided Bx

Interventions

SURGERY

# Nursing assessment

1. Cough
  2. Wheeze
  3. Dysnea
  4. Hoarseness of voice
  5. Weight loss
  6. Hemoptysis +/-
- local growth of Tumor
- RUN #
- CACHEXIA



MCC of hemoptysis → VIRAL BRONCHITIS

MCC of massive hemoptysis → TB (Bronchial A)

Treatment of choice of massive hemoptysis → Bronchial A embolization

# Nursing interventions

1. Check for respiratory distress; ↓ spO<sub>2</sub> and respiratory rate ↑
2. Analgesics and supplementary oxygen
3. Fowler position
4. Bronchodilators on prescription
5. High protein and high calorie diet rich in vitamins

Non surgical interventions

Radiotherapy 1

Chemotherapy 2

↓  
\* CISPLATIN + IRINOTECAN

Surgical interventions

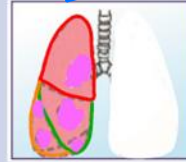
A

Segmental resection  
Lobectomy



B

Pneumonectomy



C

Pleurodesis

↓  
Adhesions  
between pleura  
layer: 1°

↓  
Recurrence of

