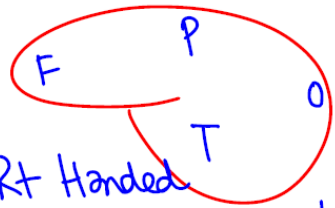
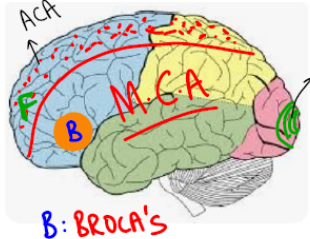


Central Nervous System Part-1

Central nervous system Part 1

Lobes of Cerebrum and functions



- * Frontal lobe
- * Temporal lobe
- * Occipital lobe

* Parietal lobe Rt Handed
 # LMCA L. Dominant: SPEECH: APHASIA Handed α 1 dominance

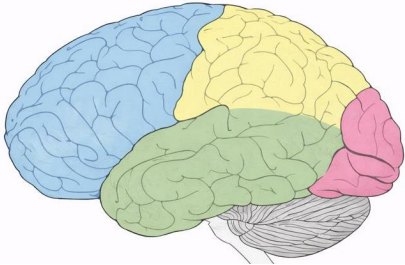
RmCA R. Non-dominant: \triangle ∇ \star \circ
 (Visuo-spatial skills) Loss of visuospatial skills
 : APRAXIA Constructional
 * PROSOPROGNOSIA = impaired facial recognition

Antisocial behaviour, personality change, Magnetic gait
 \rightarrow AMNESIA #
 \rightarrow Homonymous Hemianopia

Blood supply: [] ACA [] PCA [] MCA

Central Nervous System Part-1

Lobs of cerebellum and functions



Cerebellum

N
I
S
H
A

NYSTAGMUS

INTENTIONAL TREMORS: FINGER NOSE TEST

SCANNING SPEECH

HYPOTONIA

ATAXIA gait → lean to ipsilateral side

2 Hemisphere

HEMISPHERES: 2

LOBES: ANT POST
6

Smallest
FLOCCUNODULAR
LOBES

Superior cerebellar A

AICA Ant inf. cerebellar A

PICA Post inf " "

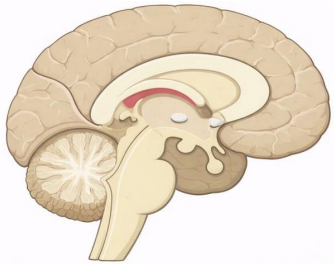
Blood supply



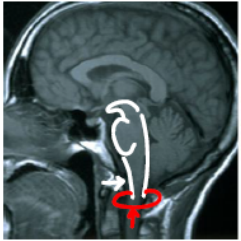
ARBOR VITAE / FERN

CEREBELLUM

N
I
S
H
A



Brainstem



Mid brain → CRN PALSY
3, 4, 5



Pons → 5, 6, 7

Medulla : 5, 8, 9, 10, 11, 12
Medial medullary syndrome

Medulla : PACEMAKER of Respi. CENTRE
PRE-BOTZINGER COMPLEX ✓
VASO MOTOR CENTER ✓

Brainstem



Mild brain

Pons

Medulla

Types of cells of brain	Function
Glial cells/ Astrocytes	SUPPORT CELLS
Neurons *	STORE INFORMATION, MEMORY
Oligodendrocytes	MYELIN) OPS
Microglia	SECURITY (LIVER: KUPFFER cells)
Betz cells	MOTOR CORTEX / CORTICO - spinal AREA 4 pathway
Purkinje cells ✓ Golgi cells ✓ Granular cells ✓	CEREBELLUM Purkinje fiber golgi Tendon organ: Muscle Tension

Types of cells of brain	Function
Glial cells / astrocytes	
Neurons	
Oligodendrocytes	
Macroglia	
Betz cells	
Purkinje cells Golgi cells Granular cells	