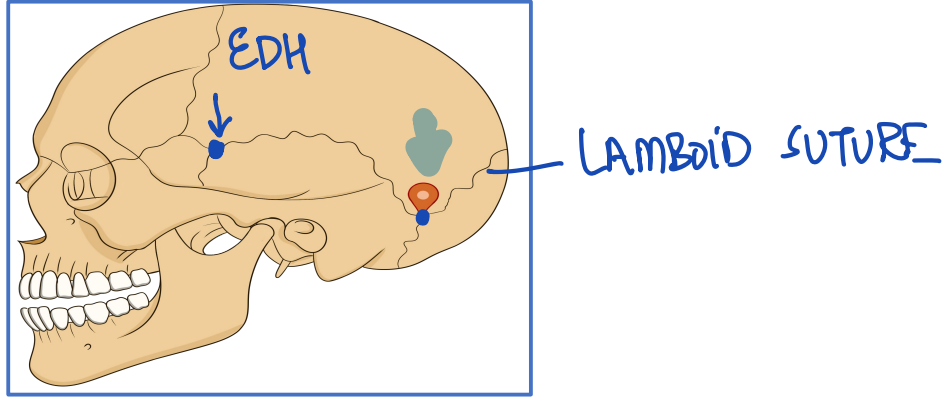


ANATOMY

POST FOSSA +

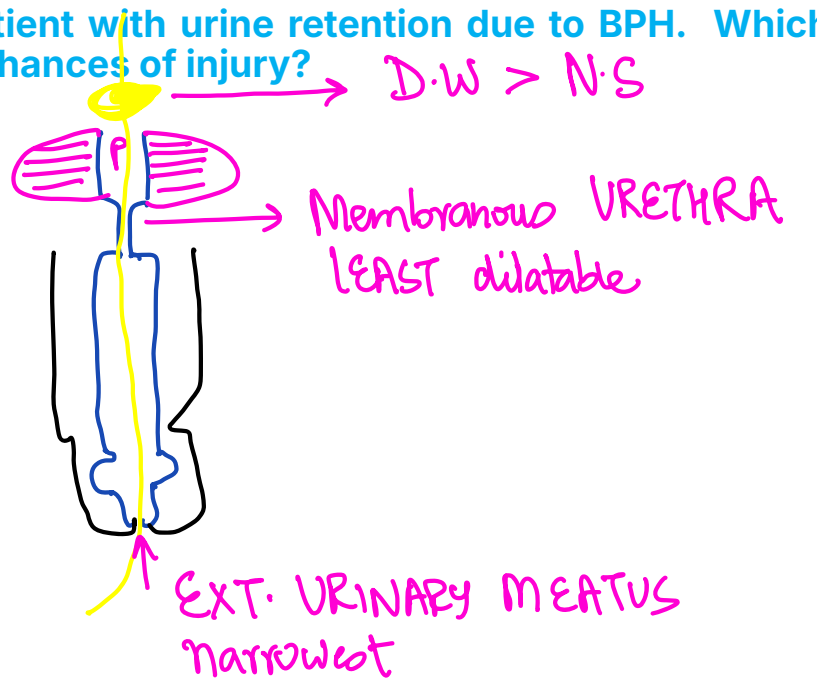
1. Neurosurgeon is planning to operate on medulloblastoma. He is asking you to do surface marking over the skull. Comment on the marked site?

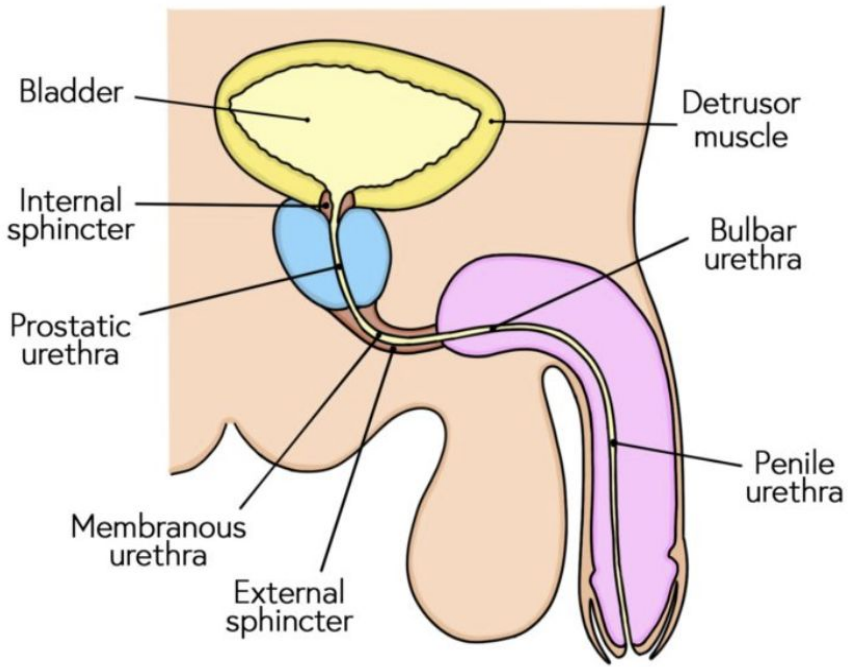
- a. Obelion
- b. Asterion
- c. Pterion
- d. ~~Glabella~~



2. You are asked to catheterize a patient with urine retention due to BPH. Which part of urethra is having the highest chances of injury?

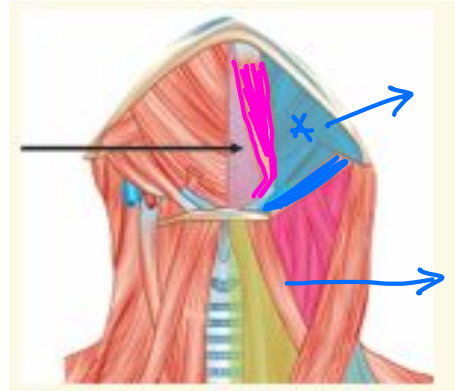
- a. Prostatic urethra
- b. Membranous urethra**
- c. Penile urethra
- d. Pre prostatic urethra





3. Identify the triangle shown in the image (marked with red arrow):

- a. Muscular triangle
- b. Submental triangle**
- c. Carotid triangle
- d. Digastric triangle

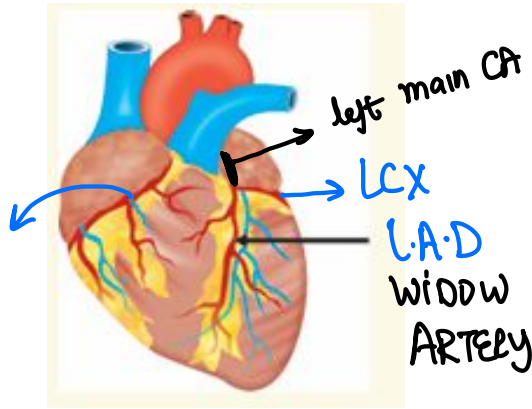
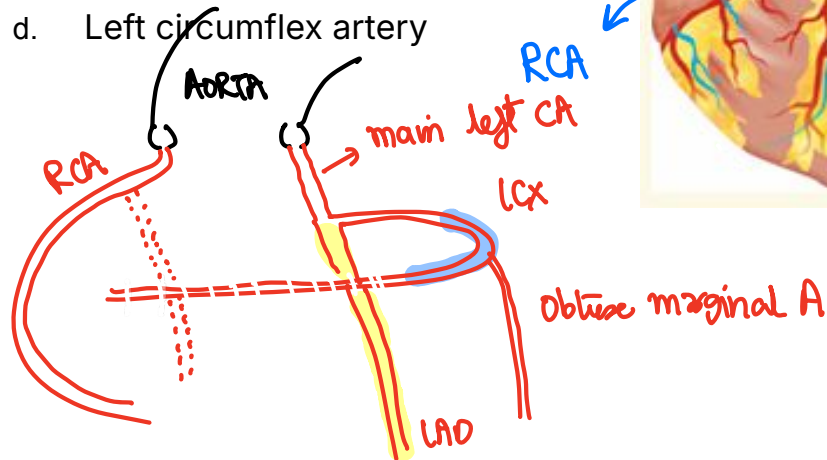


digastric Δ

omohyoid

4. Identify the marked blood vessel in the given image:

- a. Left coronary artery
- b. Right coronary artery
- c. Interventricular artery
- d. Left circumflex artery



5. A person came in with difficulty to abduct his left arm above 15 degree and loss of sensation over his left lateral arm. X-ray of the affected arm is given. Which structure is most probably affected?

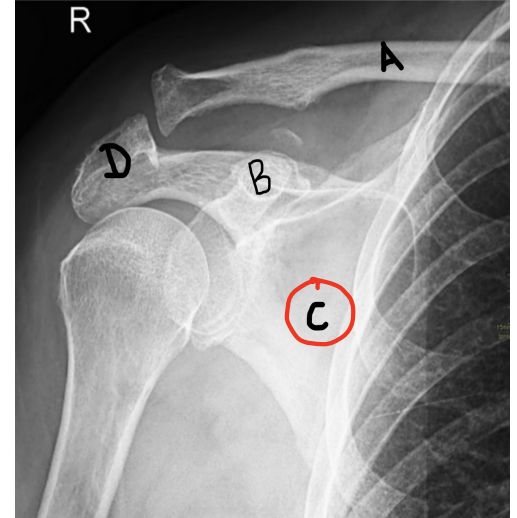
- a. Axillary nerve
- b. Radial nerve WRIST DROP
- c. Musculocutaneous nerve
- d. Subscapular nerve



* Regimental band anaesthesia

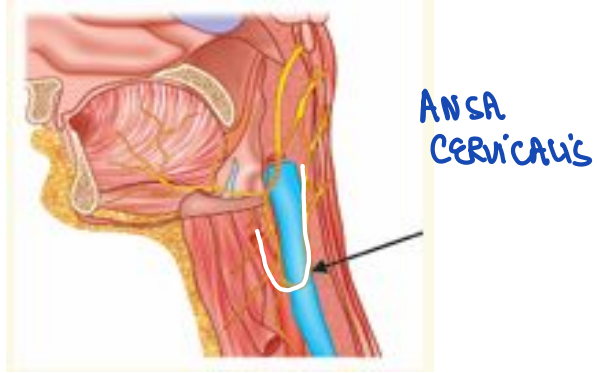
6. Match the corresponding structures according to the labels in the given image:

- a. A – clavicle, B-coracoid process, C-Acromion, D-Scapula
- b. A-Clavicle, B -Coracoid process, C- scapula, D-Acromion**
- c. A-clavicle, B-Acromion, C-coracoid process, D- Scapula
- d. A-clavicle, B-Acromion, C-Scapula, D- Coracoid process



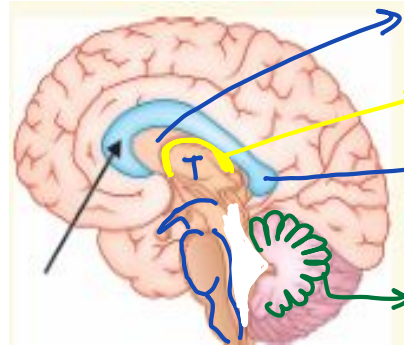
7. Which of the following muscle is **not** innervated by the nerve shown in the image?

- a. Omohyoid
- b. Thyrohyoid**
- c. Sternohyoid
- d. Sternothyroid



8. Identify the marked structure

- a. Corpus callosum
- b. Septum pellucidum
- c. Globus pallidus
- d. Fornix



IIIrd V

Fornix

SPLENIUM

ARBOR VITAE

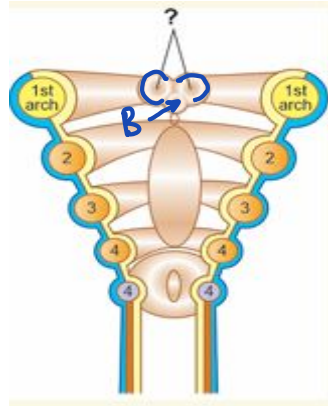
9. A 60-year-old traffic police man presented with dull pain in the both lower limb with tortuous vein as shown in the image. Which of the following structure is involved?

- a. Great saphenous vein
- b. Short saphenous vein
- c. Popliteal vein
- d. Femoral vein



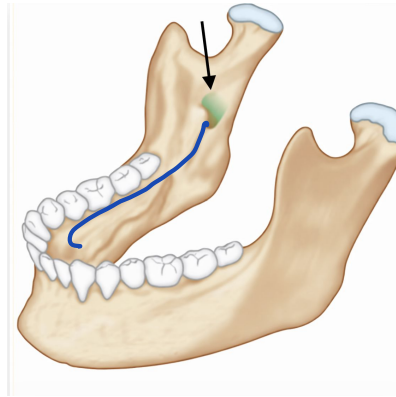
10. Identify the marked structure in the given image.

- a. Lingual swelling
- b. Tuberculum impar
- c. Hypobranchial eminence
- d. 2nd arch



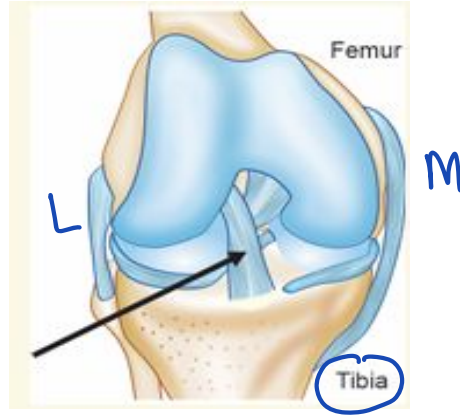
11. What is the nerve that passes through the marked structure in the given image?

- a. Inferior alveolar nerve
- b. Lingual nerve
- c. *M* Hypoglossal nerve | *Tongue*
- d. Greater auricular nerve | *neck*



12. Identify the ligament marked in this image?

- a. Anterior cruciate ligament
- b. Posterior cruciate ligament
- c. Medial cruciate ligament
- d. Lateral cruciate ligament



13. Identify the muscle along with its action

- a. Dorsal interossei – adduction
- b. Palmer interossei – adduction
- c. Dorsal interossei – abduction
- d. Palmer interossei – abduction



DAB
* bipennate

14. A constriction was encountered at the 40th cm from the incisor during an endoscopy session. Which among the following causes the constriction?

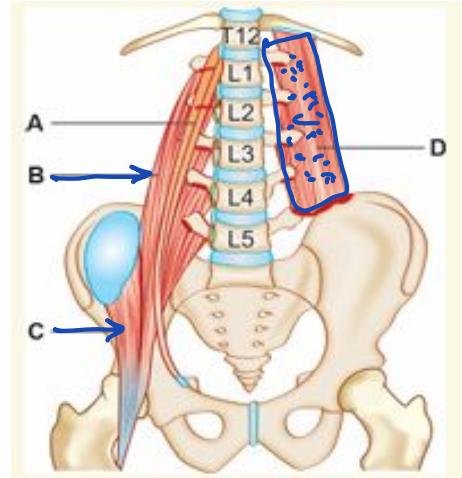
- a. Thyroid cartilage
- b. Arch of aorta
- c. Opening of diaphragm
- d. Cricopharyngeal muscle

15	CP	: FB COIN
23	Arch	AORTA
28	L. bronchus	
40	UES	

* Ng Tube : 125 cm , 4 openings

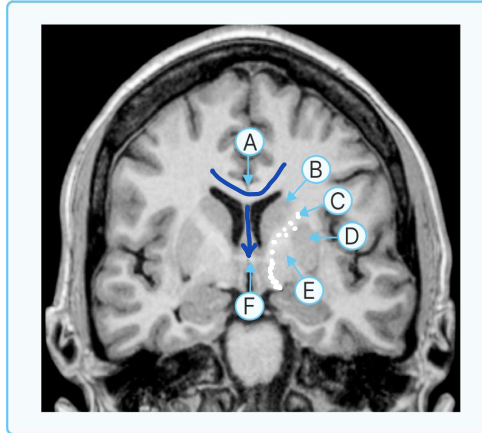
15. Identify the muscles given in the image.

- a. A – Psoas major , B – Psoas minor , C-Quadratus lumborum, D-Rectus Abdominis
- b. A -Psoas minor, B-Psoas major, C-Iliacus, D-Quadratus lumborum
- c. Psoas major, B-Psoas minor, C-Quadratus lumborum, D- Transverse abdominis
- d. A-Psoas minor, B-Psoas major, C-Quadratus lumborum, D- Iliacus



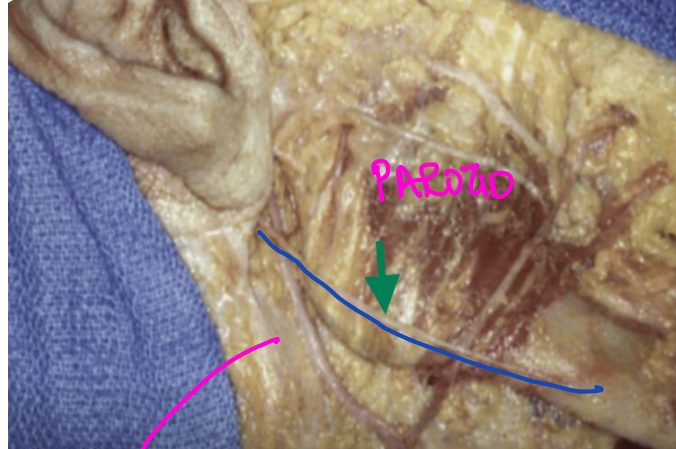
16. Structure marked as C is shown below as

- a. Caudate nucleus - B
- b. Thalamus
- c. Internal capsule
- d. Lentiform nucleus D

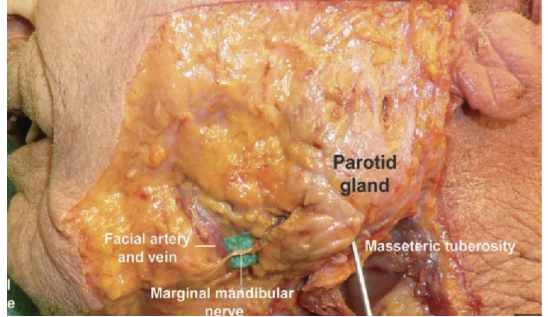
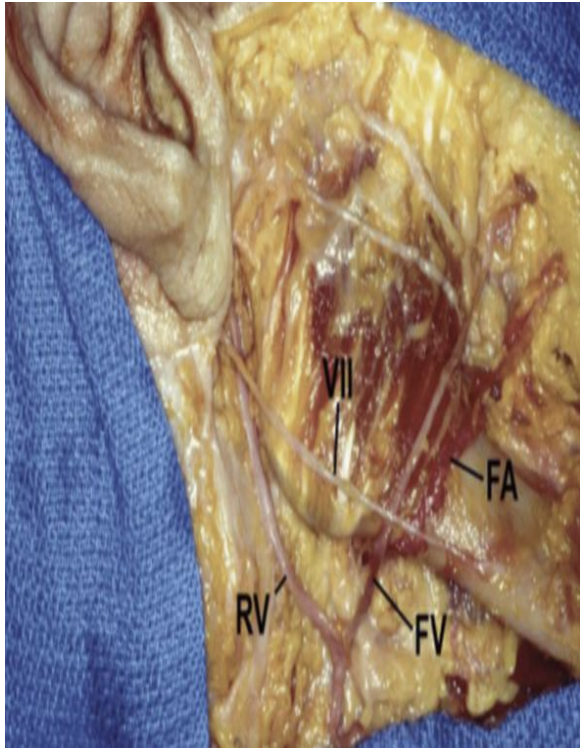
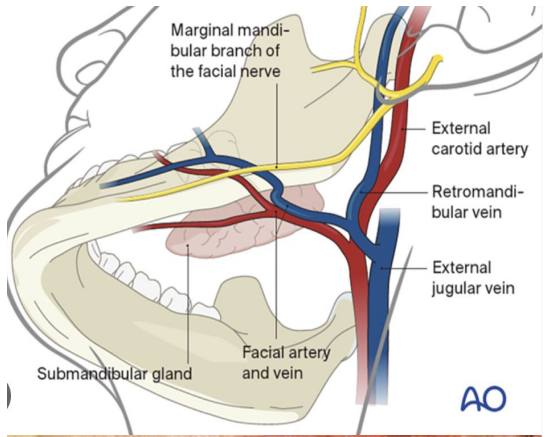


17. Identify the marked structure while the procedure of superficial parotidectomy is being performed?

- a. Chorda tympani *Tongue*
- b. Greater auricular nerve
- c. Marginal mandibular nerve
- d. Lingual nerve *Tongue*



GAN

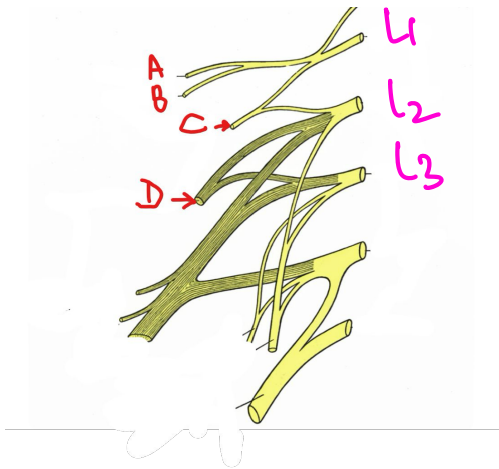


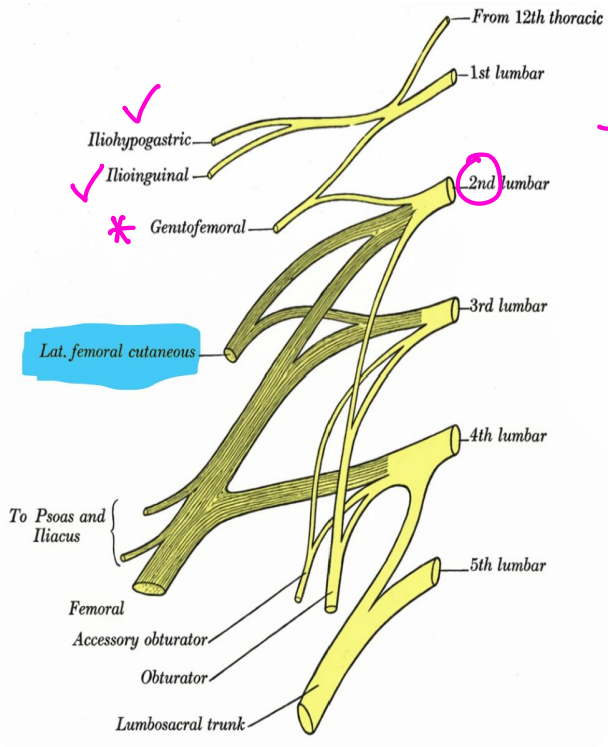
1. **Submandibular Gland Excision (most classic)**

- Most common iatrogenic injury
- Nerve lies close to lower border of mandible
- Incision placed too high or retraction injury
- Safe incision – placed 4 cm below mandible to avoid nerve

18. Involvement of which of the following leads to meralgia parasthetica

- a. A
- b. B
- c. C
- d. D





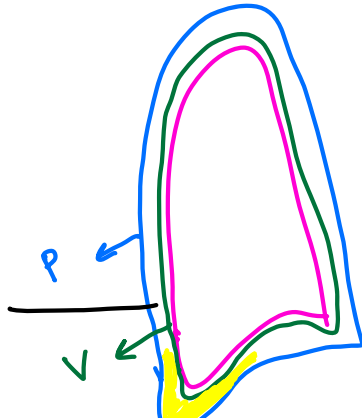
Meralgia paresthetica

→ L2-L3 lateral femoral cutaneous nerve compression near ASIS

* Cheiralgia paresthetica
 sup. branch Radial N

19. You are doing thoracentesis in a patient. Which of the following is correct about the layers pierced?

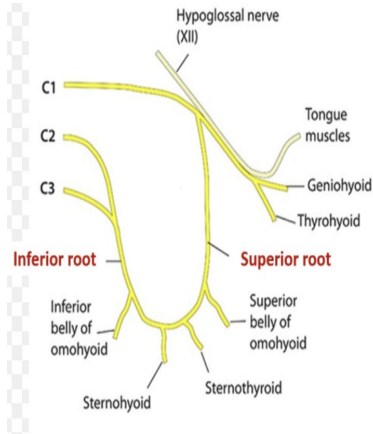
- a. Skin, sc tissue- serratus anterior- intercostal muscles and parietal pleura
- b. Skin, sc tissue- serratus anterior- intercostal muscles and visceral pleura *pneumothorax*
- c. Skin, sc tissue- intercostal muscles-serratus anterior and parietal pleura
- d. Skin, sc tissue- intercostal muscles-serratus anterior and visceral pleura



20. Which of the following muscles is not supplied by Ansa cervicalis?

- a. Sternohyoid
- b. Sternothyroid
- c. Thyrohyoid
- d. Omohyoid

- Ansa cervicalis is a nerve loop in the anterior triangle of the neck, formed by branches of the cervical plexus (C1, C2, C3)
- It supplies all **infrahyoid (strap) muscles** EXCEPT thyrohyoid



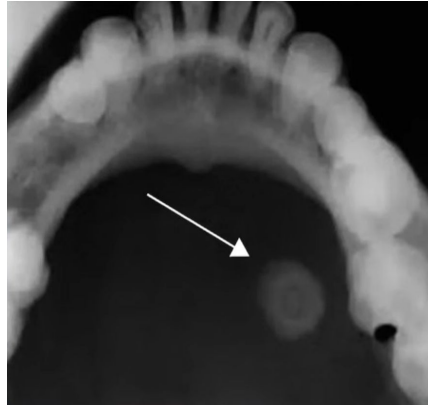
21. A 35-year-old man presents with recurrent pain and swelling in the floor of the mouth, especially during meals for last one year. On examination, there is tenderness in the submandibular region. An X-ray shows a round radiopaque lesion in the floor of the mouth. What is the location of this lesion?

(a) Wharton duct

b. Stensen duct **PAROTID**

c. Bartholin duct

d. Rivinus duct



1. Parotid – Stensen's duct

- Crosses masseter muscle
- Pierces buccinator muscle
- Opens opposite upper 2nd molar tooth
- Landmark: midpoint of tragus to midpoint of upper lip

2. Submandibular – Wharton's duct

- -5 cm long
- Runs forward on hyoglossus muscle
- Crossed by lingual nerve (lingual nerve crosses it twice- Twice crossing)
- Opens at sublingual papilla beside lingual frenulum
- Prone to calculi (stones) – due to uphill flow against gravity

3. Sublingual – Bartholin's + Rivinus ducts

- Bartholin's duct – major duct, may join Wharton's duct
- Rivinus ducts – 8-20 small ducts open along sublingual fold
- Opens along plica sublingualis (sublingual fold)

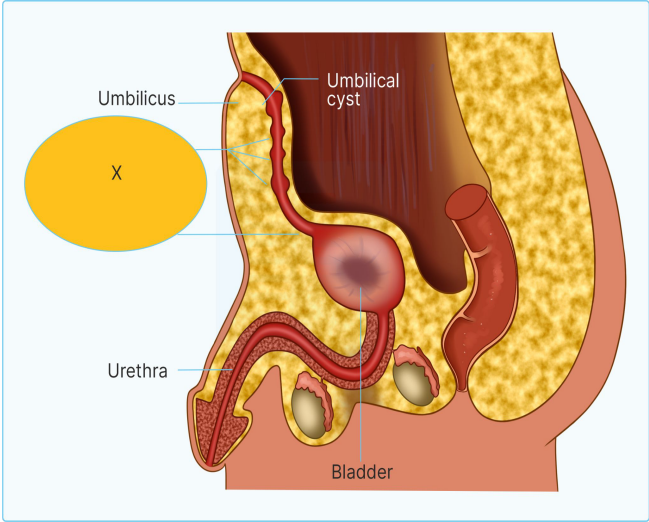
22. A patient presents with ankle pain and swelling following a forceful eversion injury. Based on the mechanism of injury, which ligament is most likely to be damaged?

- a. Anterior talofibular ligament
- b. Calcaneofibular ligament
- c. Deltoid ligament
- d. Posterior talofibular ligament



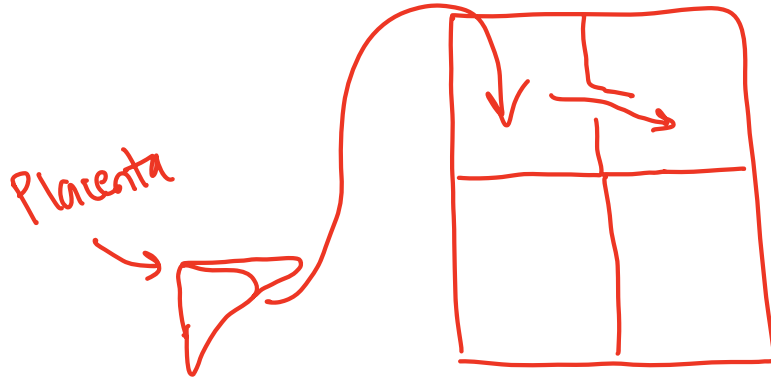
23. Neonate is born with complaints of passage of faeces from umbilicus. This occurs due to persistence of which of the following?

- a. Vitello-intestinal duct
- b. Urachus URINE
- c. Left umbilical vein
- d. Right umbilical vein

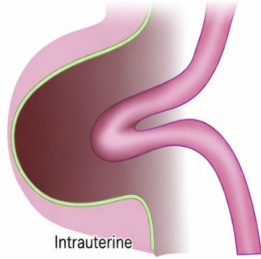


24. Correct about Foramen ovale in heart?

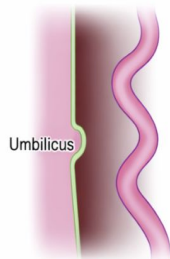
- a. Allows oxygenated blood from placenta to exit from right to left atria
- b. Allows oxygenated blood from placenta to exit from left to right atria
- c. Allows deoxygenated blood from placenta to exit from right to left atria
- d. Allows deoxygenated blood from placenta to exit from left to right atria



P.F.O
paradoxical
embolism

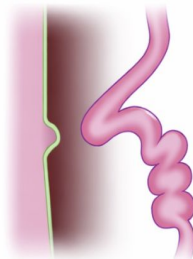


Intrauterine

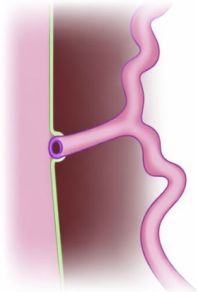


Umbilicus

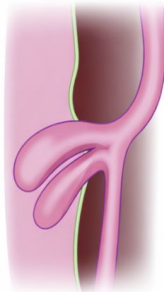
Normal



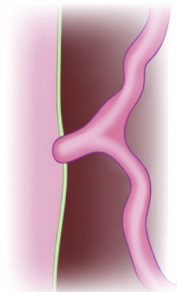
Meckel's diverticulum



Patent vitelointestinal duct



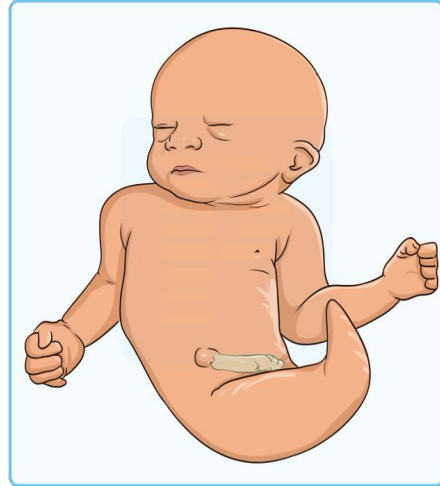
Bowel prolapse



Bowel attached to umbilicus

25. Select the correct statement for the image shown below?

- a. Defect in gastrulation
- b. Defect in primitive streak
- c. Defect in closure of anterior neuropore
- d. Defect in zona pellucida



SIRENOMELIA
mermaid syn

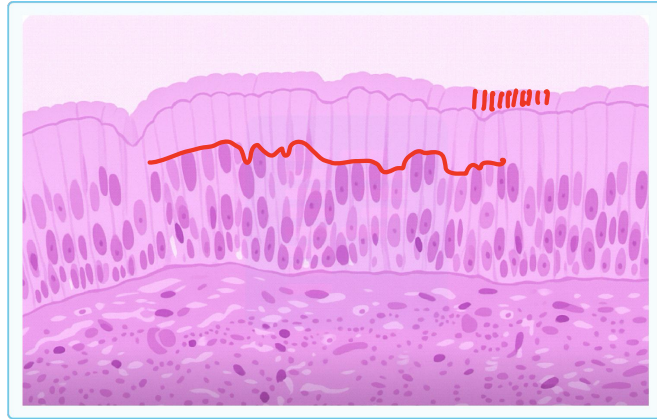
Defect of gastrulation during 3rd week

Structures derived from caudal mesoderm are fused

- Fused lower limbs give "mermaid appearance"
- Renal agenesis
- Absent bladder/genitalia
- Imperforate anus

26. Comment on the type of epithelium shown?

- a. Stratified ciliated columnar
- b. Pseudostratified ciliated columnar**
- c. Stratified squamous **SKIN**
- d. Pseudostratified squamous



Trachea

27. Comment on type of epithelium

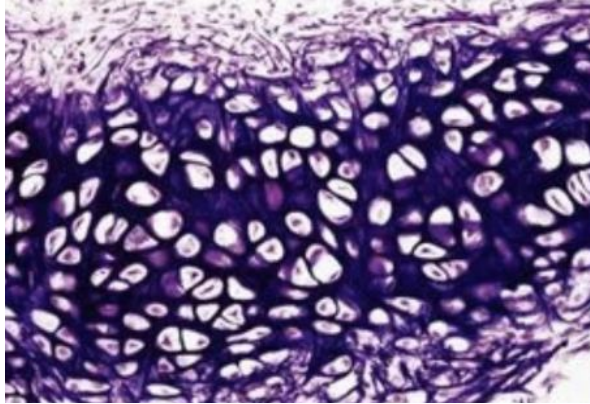
- a. Basal
- b. Columnar
- c. Squamous
- d. Transitional**

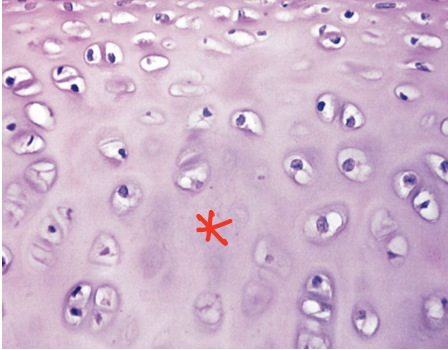
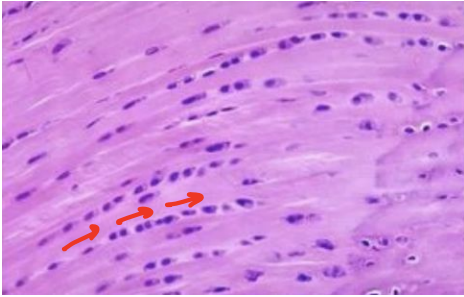
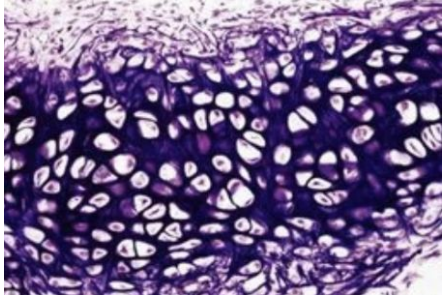


Urinary bladder *

28. Comment on the diagnosis

- a. Hyaline
- b. Elastic**
- c. Fibrocartilage
- d. Fibroelastic



Hyaline	Fibrocartilage	Elastic <i>Basophilic</i>
		

A: Smooth + glassy → Hyaline

B: Pink + rows → Fibrocartilage (100%)

C: Black messy fibers → Elastic

The stain used here appears to be **Verhoeff's or Orcein**, which highlights elastic fibers in dark purple/black.

29. Cleft lip occurs due to?

- a. Failure of fusion of lateral palatine shelf with nasal septum
- b. Failure of fusion of medial palatine shelf with nasal septum
- c. Failure of fusion of intermaxillary segment with mandibular process
- d. Failure of fusion of intermaxillary segment with maxillary process

Cleft lip

- Failure: Intermaxillary + Maxillary
- Usually unilateral
- Seen anterior to incisive foramen

Cleft Palate

- Failure: Palatine shelves fusion
- Posterior defect
- Feeding + speech problems

30. The following lesion occurs due to defects in development of which of the following?

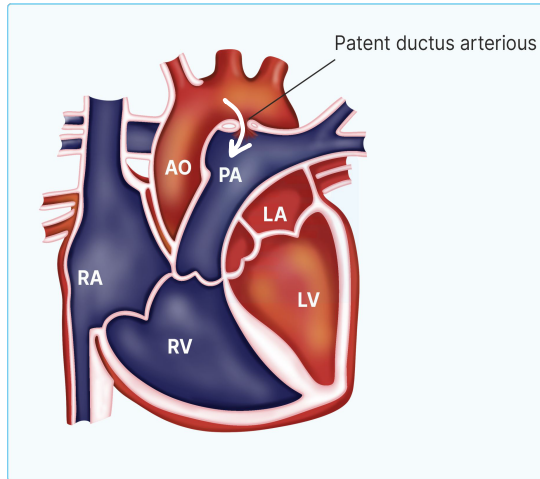
- a. 1st branchial cleft
- b. 2nd branchial cleft
- c. 1st branchial pouch
- d. 2nd branchial pouch



PRE-
AURICULAR
SINUS

31. The following defect occurs due to which of the following?

- a. 1st arch
- b. 4th arch left
- c. 4th arch right
- d. 6th arch**



32. Type of collagen found in blood vessels?

a. Type I granulation

b. Type II

c. Type III

d. Type IV B.M


33. Which of the following is not a site of ball and socket joint? =

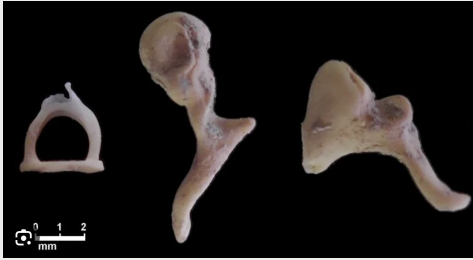
a. Hip joint ✓

b. Incudostapedial joint ✓

c. Shoulder joint ✓

d. Incudo-malleolar joint Im sad: Saddle



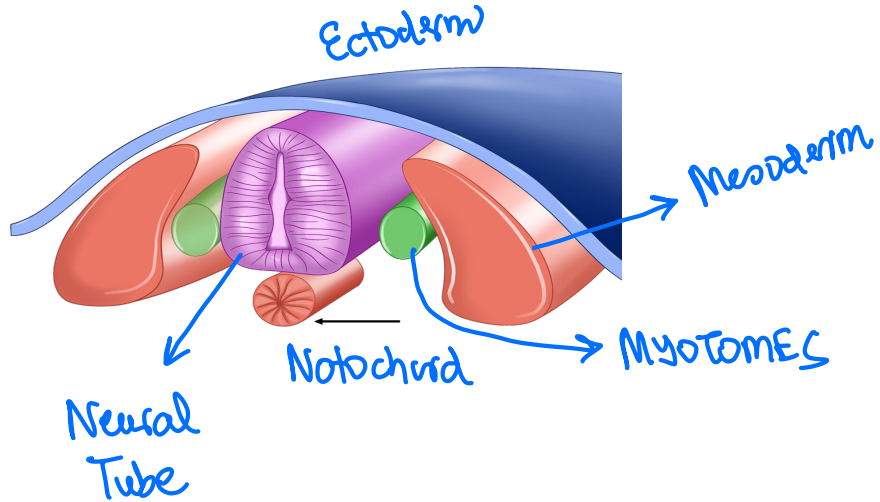


I am sad ICUDO MALLEOLAR joint is
SADDLE joint

I am partying: having a ball:
INCUDOSTAPEDIAL is ball and socket J

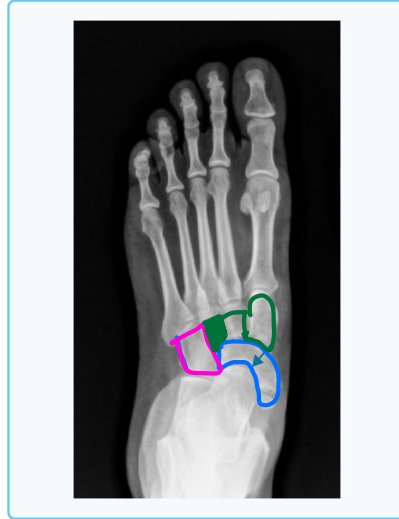
34. Which structure is formed by the structure indicated by the arrow?

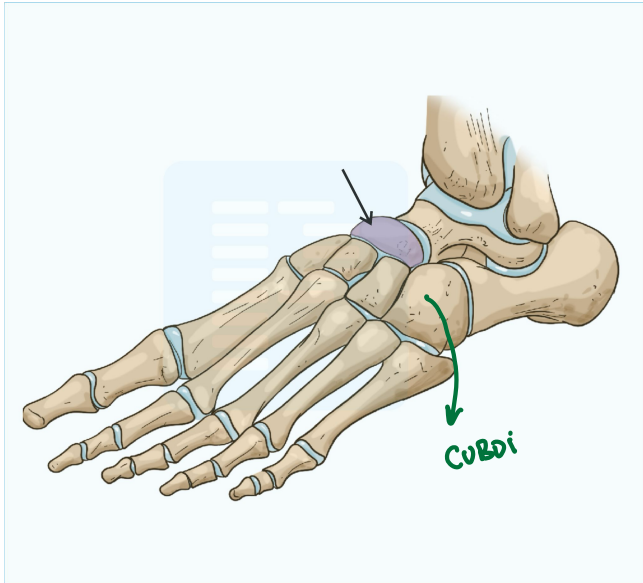
- a. Annulus
- b. Nucleus pulposus**
- c. Neural tube
- d. Septum Transverse



35. In the given x-ray of foot, the structure indicated is identified as?

- a. Intermediate cuneiform
- b. Lateral cuneiform
- c. Cuboid
- d. Navicular

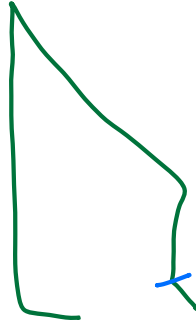




36. A man sustained trauma on the lateral side of his right knee. Two days later, he complains of difficulty in walking, as his toes keep dragging on the ground. He also notices numbness over the upper lateral aspect of the leg and dorsum of the foot. Which nerve is most likely injured?

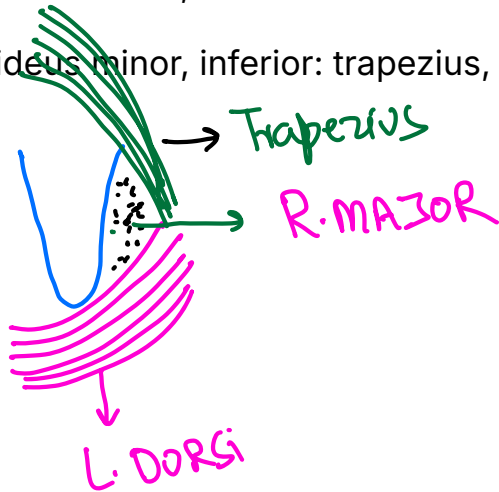
- a. Tibial nerve
- b. Common peroneal nerve
- c. Deep peroneal nerve
- d. Femoral nerve

* FOOT DROP



37. Correct about boundaries of triangle of auscultation

- a. Floor: Rhomboideus major, inferior: latissimus dorsi, superior: trapezius
- b. Floor: Rhomboideus major, inferior: trapezius, superior: latissimus dorsi
- c. Floor: Rhomboideus minor, inferior: latissimus dorsi, superior: trapezius
- d. Floor: Rhomboideus minor, inferior: trapezius, superior: latissimus dorsi



38. Heterotopic transplantation is done in surgery of which organ

- a. Parathyroid
- b. Heart
- c. Liver
- d. Cornea

ORTHO TOPIC: same site

*

39. Positive Trendelenburg sign is seen due to paralysis of which of the following muscles?

- a. Gluteus maximus
- b. Piriformis
- c. Gluteus medius**
- d. Sartorius

* CLL SAG OF PELVIS

* I/L LURCH

* Gluteus Medius, minimus

40. The strongest ligament of the body is?

a. Ischio-femoral

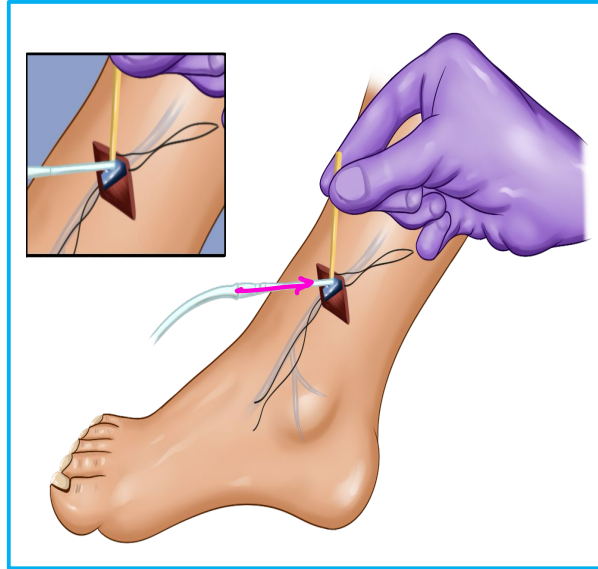
b. Iliofemoral

c. Pubofemoral

d. Spring

41. The following procedure is being done for infusing fluids in patients with upper extremity burns. Which is the vein being cannulated?

- a. Posterior tibial
- b. Great saphenous
- c. Short saphenous
- d. Ante-cubital



VENOUS
CUT DOWN

42. Which is correct about coronary sinus?

- a. Origin of left main coronary artery
- b. Origin of left anterior descending artery
- c. Venous drainage into right atrium
- d. Venous drainage into left atrium

THEBESIAN
VEINS

CORONARY
OSTIA



* Left MAIN CA

43. The patient develops subcutaneous emphysema and chest pain during upper GI endoscopy. The likely distance of injury from incisor teeth would be?

- a. 15 cm
- b. 22.5 cm
- c. 25 cm
- d. 40 cm

BOERRHAVE

OESOPHAGUS

The oesophagus is a muscular tube, between 20 and 25 cm long in the adult (Kaisha Otsianyi et al 2011), that connects the pharynx to the stomach (see Figs 56.6, 56.16; Figs 56.13–56.14). It starts in the neck, level with the lower border of the cricoid cartilage (i.e. level with the body of the sixth cervical vertebra in females and the body of the seventh cervical vertebra in males). It descends largely anterior to the vertebral column through the superior and posterior mediastina, passes through the oesophageal hiatus in the respiratory diaphragm level with the superior half of the body of the eleventh thoracic vertebra (range, the body of the ninth thoracic vertebra to L1–L2 intervertebral disc) and ends at the gastric cardiac orifice, to the left of the midline, posterior to the left seventh costal cartilage and level with the body of the eleventh thoracic vertebra (range, superior half of the body of the tenth thoracic vertebra to L1–L2 intervertebral disc).

Generally vertical in its course, the oesophagus normally displays two shallow curves. Starting in the median plane, it inclines to the left as far as the inferior neck, gradually returns to the median plane near the body of the fifth thoracic vertebra, then deviates leftwards again at the body of the seventh thoracic vertebra before passing through the respiratory diaphragm. The oesophagus also deviates in the sagittal plane as it follows the cervicothoracic vertebral lordosis. Further inferiorly, it is pushed slightly to the right by the descending thoracic aorta before resuming its leftward course towards the oesophageal hiatus. It is the second narrowest part of the alimentary tract (the narrowest is the vermiform appendix) and is constricted at multiple points along its course, that are measured relative to the incisor teeth during oesophagoscopy. The constriction points are at its origin, where it is surrounded by cricopharyngeus (15 cm from the incisor teeth); where it is crossed anteriorly by the aortic arch (23 cm from the incisor teeth), and by the left main bronchus (28 cm from the incisor teeth); and as it passes through the respiratory diaphragm (40 cm from the incisor teeth). In

44. Which of the following has the smallest diameter in colon

a. Ascending colon

b. Transverse colon

c. Descending colon

d. Sigmoid colon *DIVERTICULOSIS*



45. Which is the most important muscle for opening your mouth?

a. Masseter

b. Medial pterygoid

c. Lateral pterygoid

d. Temporalis

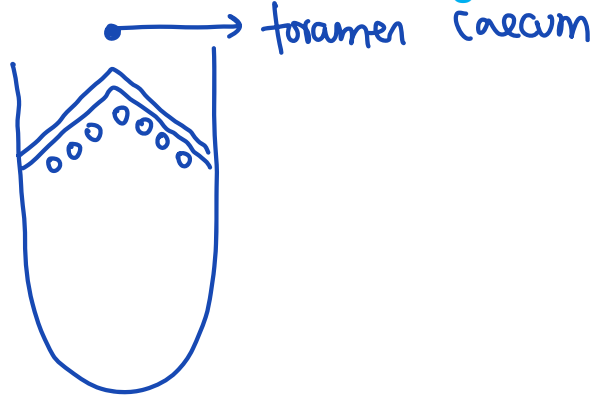


46. Skin over angle of mandible is supplied by?

- a. Auriculotemporal nerve
- b. Greater auricular nerve
- c. Lesser occipital nerve
- d. Buccal nerve

47. Which papillae are located at the sulcus terminalis of tongue?

- a. Vallate
- b. Fungiform
- c. Filiform
- d. Conical



HORNER

48. Patients with lung cancer are having ptosis, miosis, anhidrosis and loss of ciliospinal reflex. Which structure is involved to cause this manifestation?

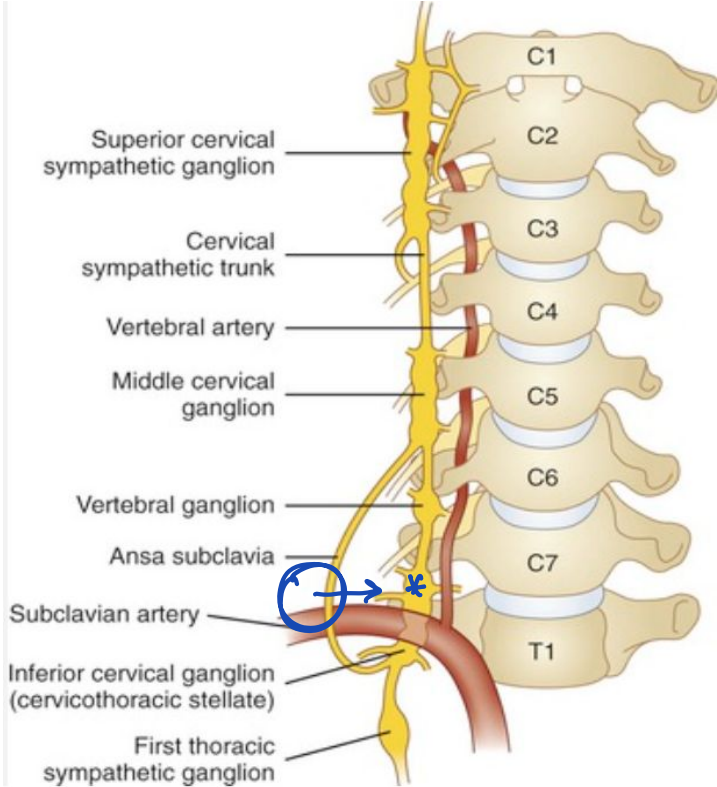
a. Superior cervical ganglion

b. Middle cervical ganglion

c. Inferior cervical ganglion *Stellate ganglion*

d. Otic ganglion

*↳ Salivary glands, pterygo palatine fossa **



49. Spinal cord is 45 cm and starts from which level?

- a. Upper border of C1
- b. Lower border of C1
- c. Upper border of L1
- d. Lower border of L1

START

END

50. Abdominal aorta bifurcates at which level?

a. L1

b. L2

c. L3

d. L4

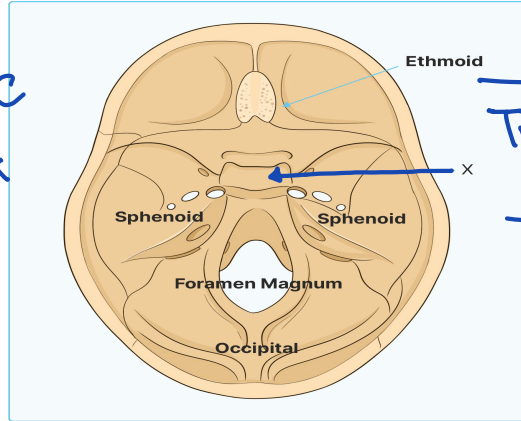
51. Correct about the marked structure is:

(a) Hypophyseal fossa

b. Rosen muller fossa NPC

c. Pyriform fossa LARYNX

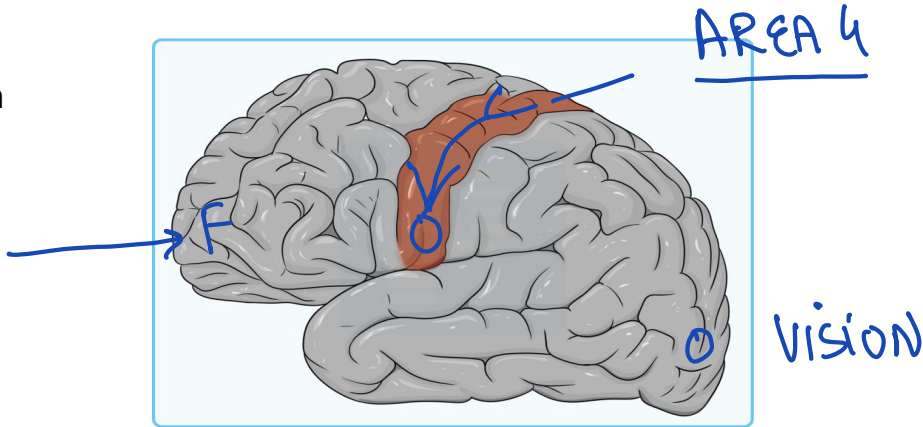
d. Ischioirectal fossa PERINEUM



TURKISH SADDLE

52. Which area of the body will have least representation in the area of the brain shown below?

- a. Thumb
- b. Vocalization
- c. Mastication
- d. Visual field



53. Which structure is shown below?

- a. Pineal gland
- b. Hypothalamus
- c. Pituitary gland
- d. Thalamus



IIIrd V

54. Which is correct about cranial nerves that originate from the pons

a. 3,4,5,6 MID BRAIN

b. 5,6,7,8

c. 6,7,8,9

d. 9,10,11,12 Medulla

55. Which is the most common cranial nerve involved in case of raised ICP?

a. 4

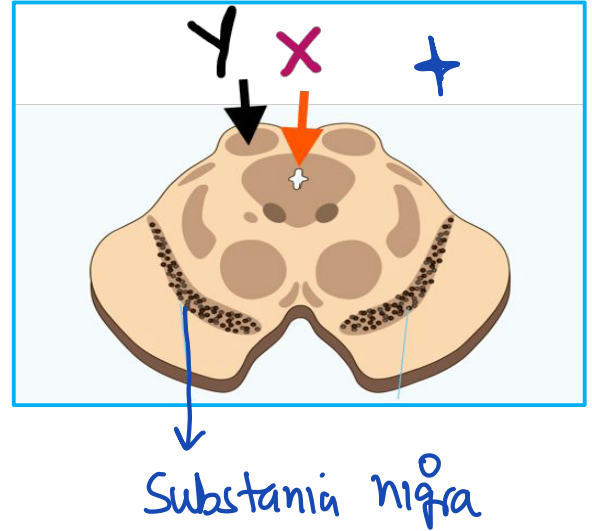
b. 6

c. 9

d. 12

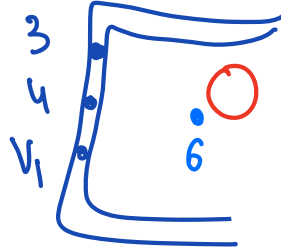
56. Which is the correct markings?

- a. X= Foramen of Munro, Y = Superior colliculus
- b. X= cerebral aqueduct, Y= Superior colliculus**
- c. X= cerebral aqueduct, Y= Inferior colliculus
- d. X= Foramen of Munro, Y= Inferior colliculus



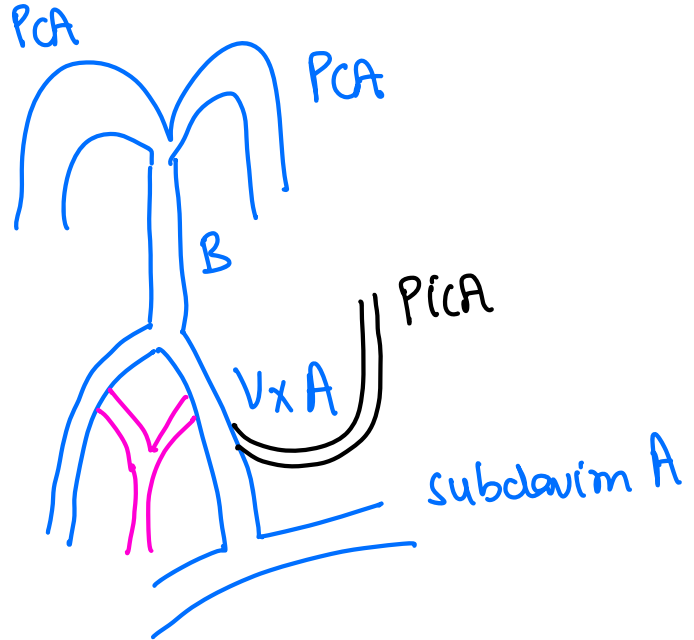
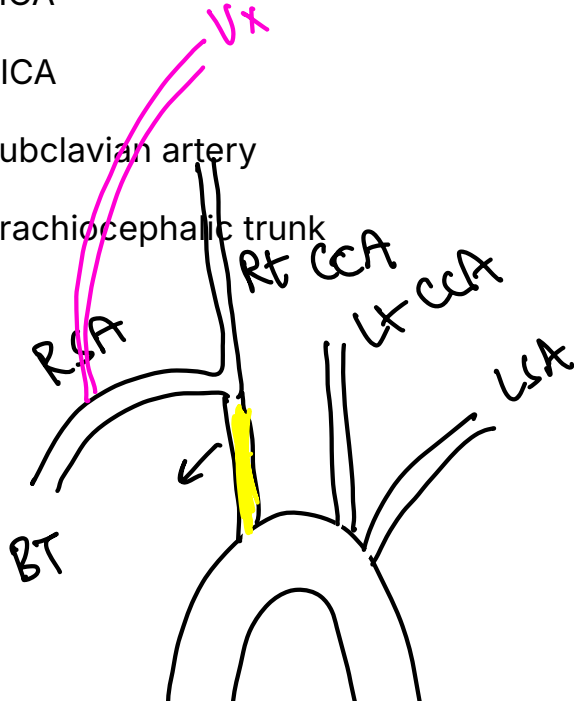
57. Which structures are free floating inside the cavernous sinus?

- a. Cranial nerve III and internal carotid artery
- b. Cranial nerve IV and internal carotid artery
- c. Cranial nerve V and internal carotid artery
- d. Cranial nerve VI and internal carotid artery**



58. Vertebral artery arises from which of the following vessels?

- a. PICA
- b. AICA
- c. Subclavian artery
- d. Brachiocephalic trunk



59. Arnold nerve originates from which cranial nerve:

- a. IX
- b. X
- c. XI
- d. XII

60. Crypts of Luschka are seen in?

a. Duodenum

LIBERKUHNS

b. Jejunum



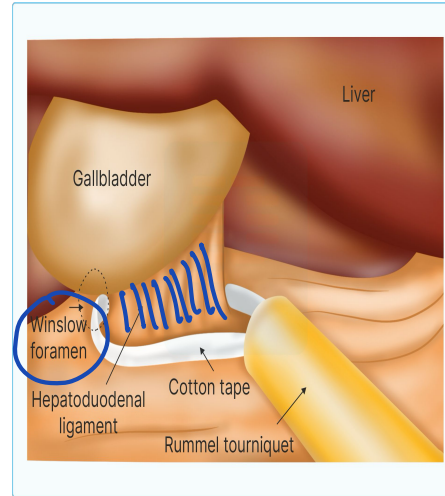
c. Gall bladder

d. Rectum

VALVULAE CONVIVENTES
(FEATHERY APP)

61. The following manoeuvre is being done during hepatobiliary surgery. Is the description correct?

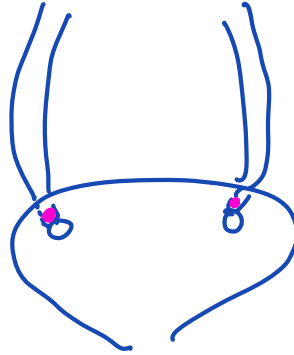
- a. Atraumatic clamp across hepatic artery in free margin of lesser omentum
- b. Atraumatic clamp across hepatic artery in free margin of greater omentum
- c. Atraumatic clamp across cystic artery in free margin of lesser omentum
- d. Atraumatic clamp across cystic artery in free margin of greater omentum

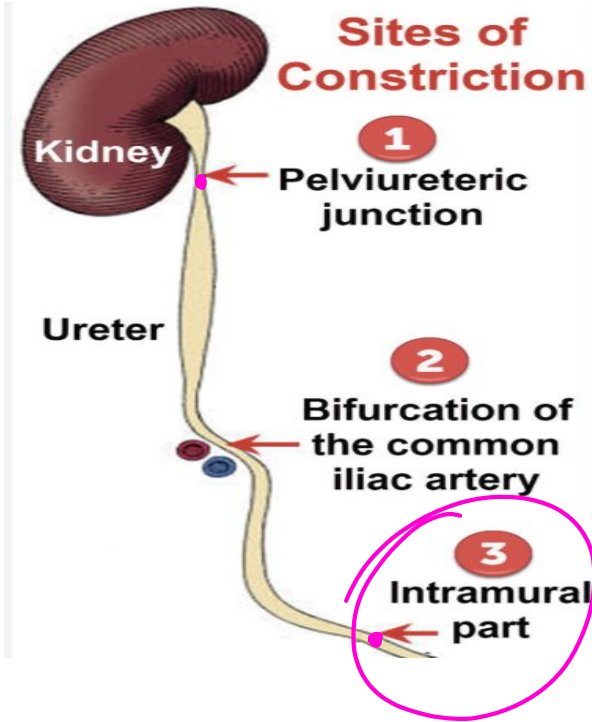


Pringle
Maneuver

62. The narrowest part of ureter is?

- a. Pelvi-ureteral junction
- b. At pelvic brim
- c. At crossing of vas deferens
- d. Vesico-ureteric junction

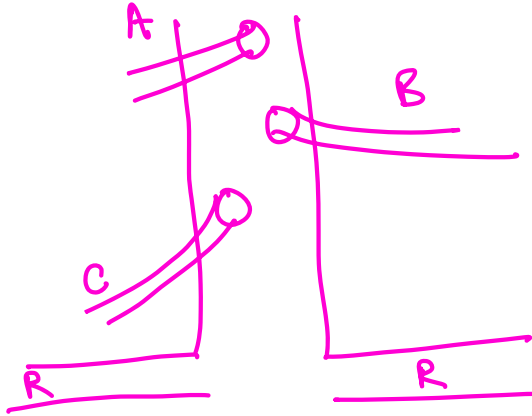




URETER ✓

63. Which of the following is not a ventral branch of the aorta?

- a. Celiac artery
- b. Superior mesenteric artery
- c. Inferior mesenteric artery
- d. Renal artery



64. Which is correct about the internal jugular vein?

- a. Starts from sigmoid sinus
- b. Seen at posterior border of sternocleidomastoid muscle
- c. Formed just behind angle of mandible by union of retromandibular with posterior auricular vein
- d. Terminates into inferior ~~vena~~ cava

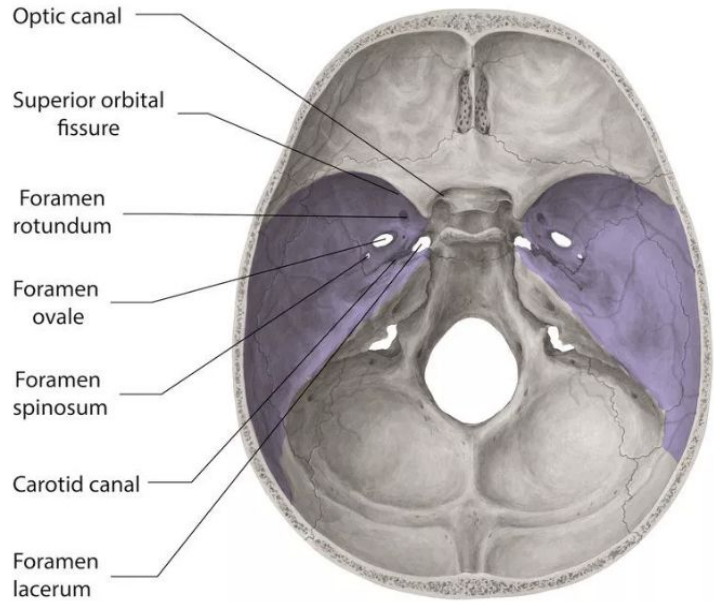
ANT

EJV

65. Which of the following is transmitted by foramen rotundum?

- a. Mandibular nerve *Ovale*
- b. Maxillary nerve
- c. Ophthalmic nerve *SOF*
- d. Nervus spinosus

V ₁	SOF
V ₂	ROTUNDUM
V ₃	Ovale



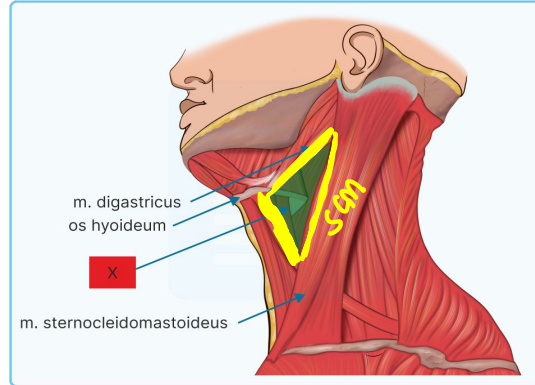
* STYLOMASTOID F = facial N

66. Structure emerging from mastoid foramen is?

- a. Facial nerve
- b. Vagus nerve
- c. Emissary vein
- d. Internal carotid artery

67. Which is the correct triangle shown below?

- a. Muscular triangle
- b. Carotid triangle
- c. Digastric triangle
- d. Submental triangle



68. Side to side rotational movement of the neck occurs at?

a. Atlanto-occipital joint

→ AAN

b. Atlanto-axial joint

→ AOY

c. C8-T1 joint

d. Erbs point

69. Valves of keckring are located in?

a. Rectum → Houston valves

b. Jejunum

c. Ileum

d. Duodenum

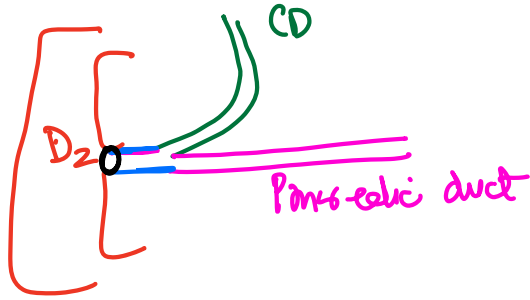
70. Major duodenal papilla opens in which part of duodenum?

a. D1

b. D2

c. D3

d. D4



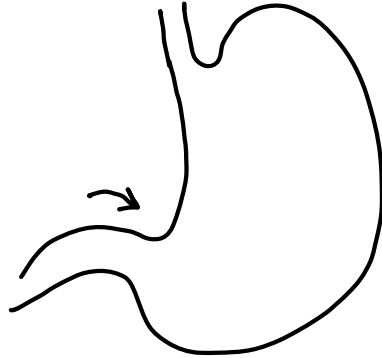
71. Ligament of Treitz is located at?

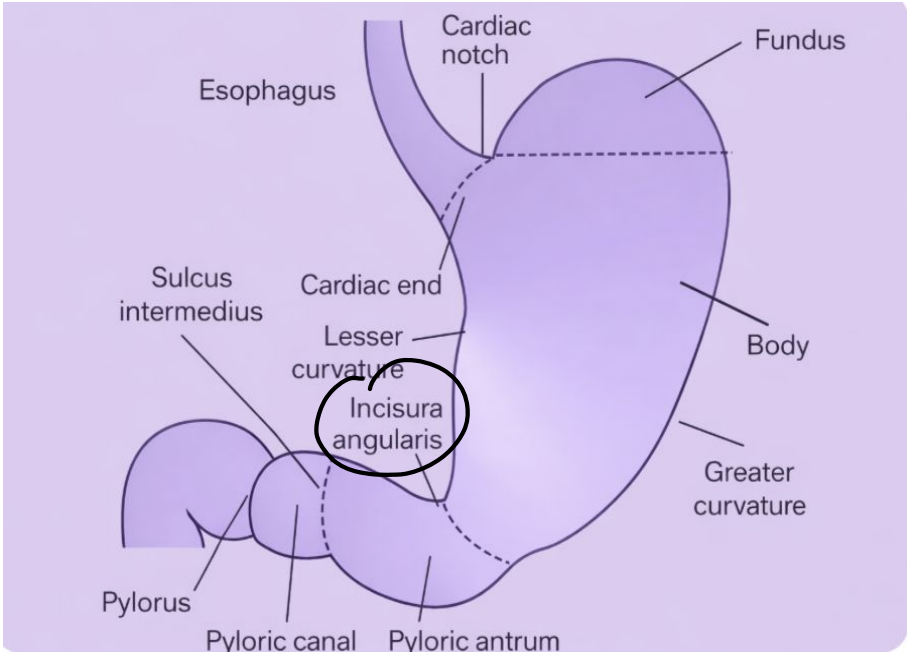
→ V Gi
L Gi bleeding

- a. Duodeno jejunal flexure
- b. Gastro-splenic flexure
- c. Hepatic flexure of colon
- d. Ileo-caecal junction

72. **Incisura angularis** is located at _____ of stomach

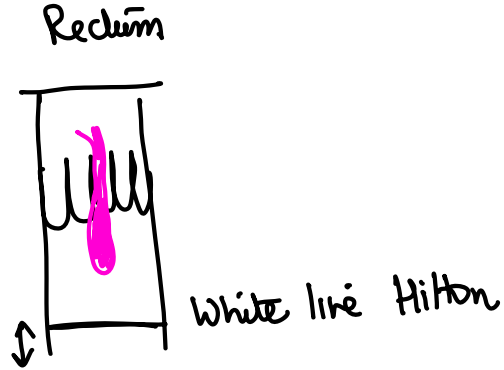
- a. Pyloric canal
- b. Cardiac notch
- c. Lesser curvature
- d. Greater curvature

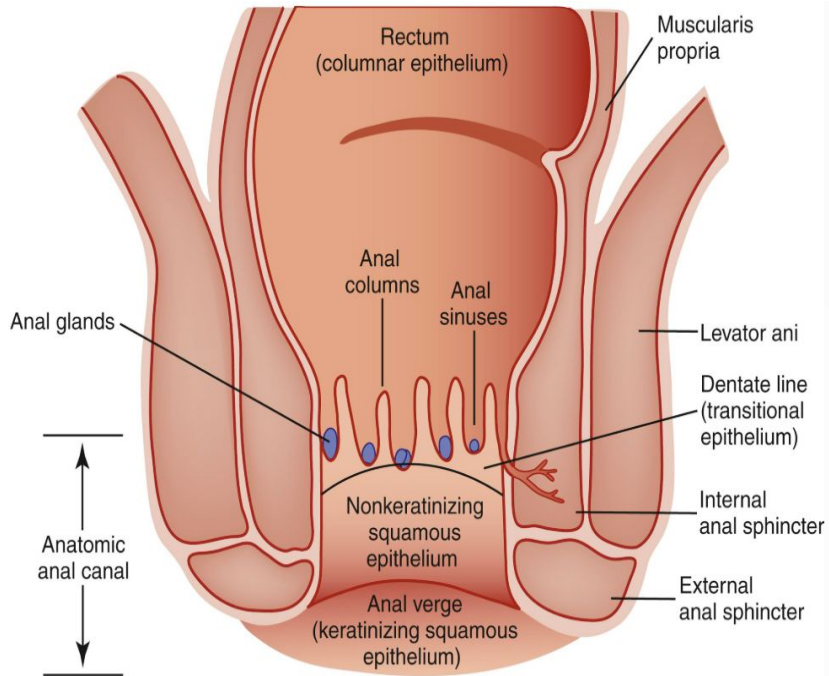




73. Columns of Morgagni are located in:

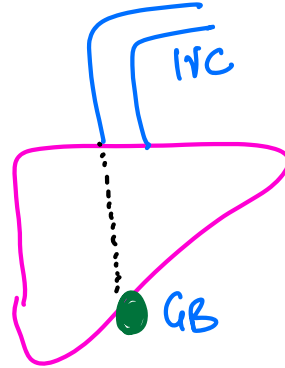
- a. Ovary hilum
- b. Diaphragm
- c. Anal canal**
- d. Appendix of testis

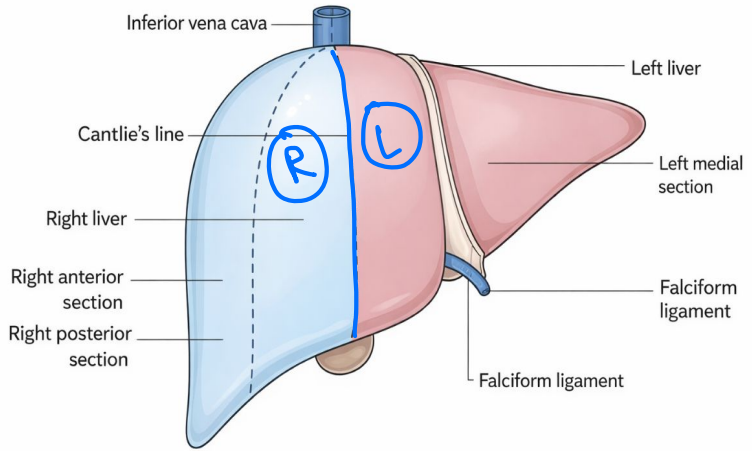




74. Cantlie line is line of demarcation in liver connecting

- a. Caudate and quadrate lobe
- b. Ligamentum teres ~~to~~ ligamentum venosum
- c. Sinusoids of liver with space of disse
- d. Fundus of gallbladder to inferior vena cava





75. Longest cutaneous nerve in body?

- a. Sciatic nerve *Thickest*
- b. Sural nerve
- c. Saphenous nerve
- d. Femoral nerve

Saphenous nerve: originates from the femoral nerve (L3,L4) in the femoral triangle
→ ends at the medial aspect of foot/big toe.

THANK YOU